

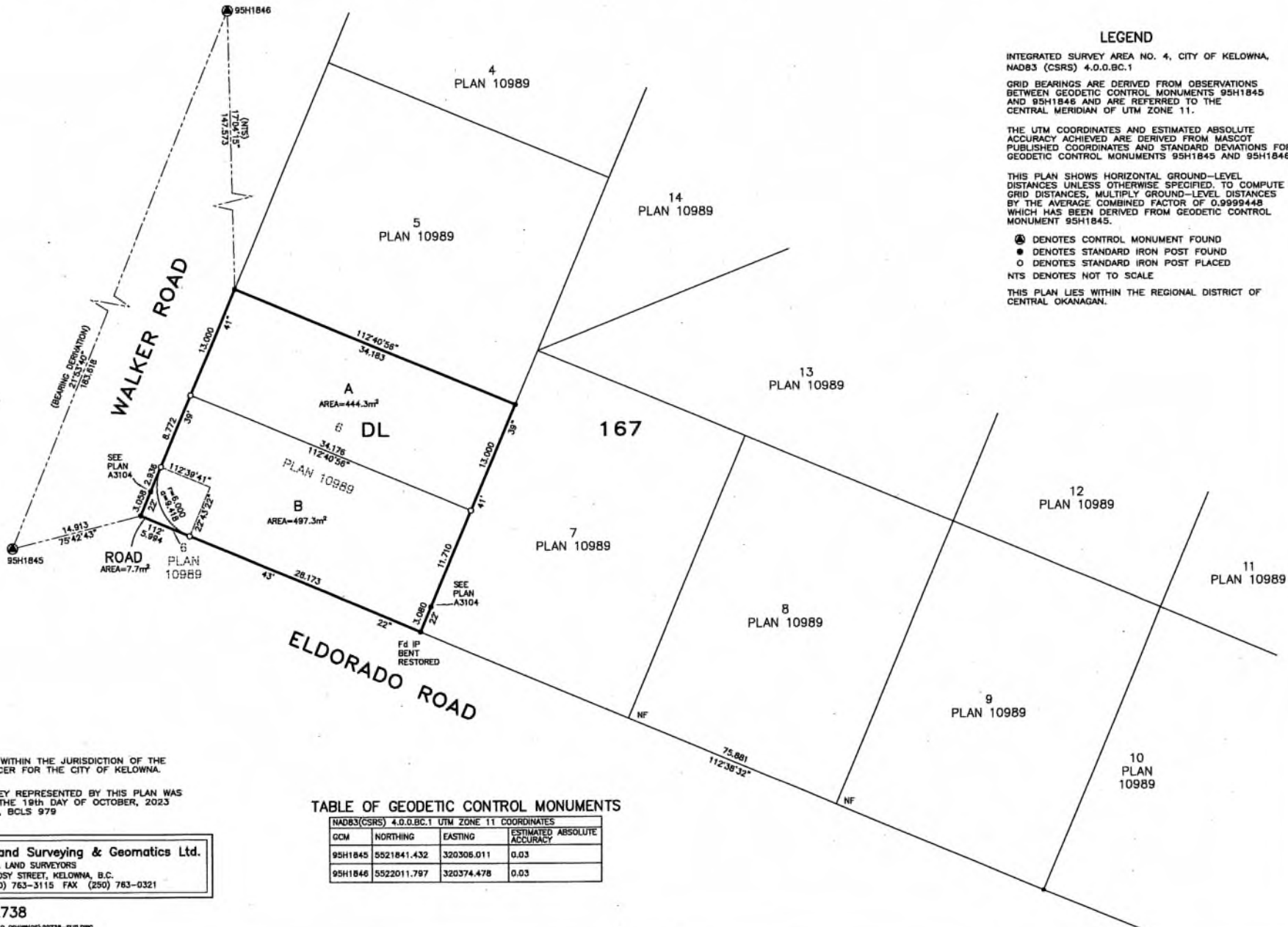
SUBDIVISION PLAN OF LOT 6 DISTRICT LOT 167
 ODYD PLAN 10989

PLAN EPP133088

BCGS 82E.083



THE INTENDED PLOT SIZE OF THIS PLAN IS 560mm IN WIDTH BY 432mm IN HEIGHT (C SIZE) WHEN PLOTTED AT A SCALE OF 1:300



LEGEND

INTEGRATED SURVEY AREA NO. 4, CITY OF KELOWNA, NAD83 (CSRS) 4.0.0.BC.1

GRID BEARINGS ARE DERIVED FROM OBSERVATIONS BETWEEN GEODETIC CONTROL MONUMENTS 95H1845 AND 95H1846 AND ARE REFERRED TO THE CENTRAL MERIDIAN OF UTM ZONE 11.

THE UTM COORDINATES AND ESTIMATED ABSOLUTE ACCURACY ACHIEVED ARE DERIVED FROM MASCO PUBLISHED COORDINATES AND STANDARD DEVIATIONS FOR GEODETIC CONTROL MONUMENTS 95H1845 AND 95H1846.

THIS PLAN SHOWS HORIZONTAL GROUND-LEVEL DISTANCES UNLESS OTHERWISE SPECIFIED, TO COMPUTE GRID DISTANCES, MULTIPLY GROUND-LEVEL DISTANCES BY THE AVERAGE COMBINED FACTOR OF 0.9999448 WHICH HAS BEEN DERIVED FROM GEODETIC CONTROL MONUMENT 95H1845.

- ⊕ DENOTES CONTROL MONUMENT FOUND
- DENOTES STANDARD IRON POST FOUND
- DENOTES STANDARD IRON POST PLACED
- NTS DENOTES NOT TO SCALE

THIS PLAN LIES WITHIN THE REGIONAL DISTRICT OF CENTRAL OKANAGAN.

THIS PLAN LIES WITHIN THE JURISDICTION OF THE APPROVING OFFICER FOR THE CITY OF KELOWNA.

THE FIELD SURVEY REPRESENTED BY THIS PLAN WAS COMPLETED ON THE 19th DAY OF OCTOBER, 2023 RYAN DELAURIER, BCLS 979

TABLE OF GEODETIC CONTROL MONUMENTS

NAD83(CSRS) 4.0.0.BC.1	UTM ZONE 11	COORDINATES	ESTIMATED ABSOLUTE ACCURACY
GCM	NORTHING	EASTING	
95H1845	5521841.432	320306.011	0.03
95H1846	5522011.797	320374.478	0.03

Ferguson Land Surveying & Geomatics Ltd.
 B.C. AND CANADA LAND SURVEYORS
 404-1830 PANDOSY STREET, KELOWNA, B.C.
 TELEPHONE (250) 763-3116 FAX (250) 763-0321

JOB No: 22738

Job File: \22738\22738.DWG DRAWING: \22738-SUB.DWG
 DWTG BY: RD FIELD CHECK: HC

